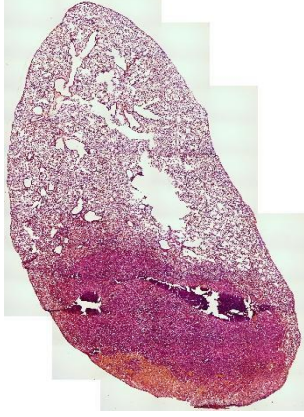


Frozen (Cryostat) Kesit Alma

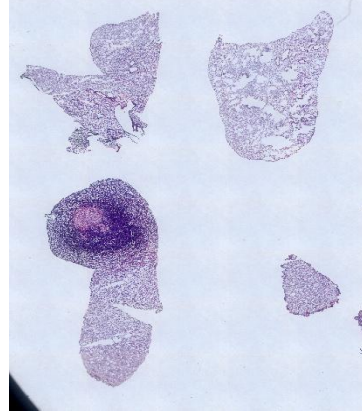
Frozen kesit yöntemi, dokuların donuk ortamda kesitlenerek hücresel yapıların korunmasını sağlayan bir tekniktir. Bu yöntem özellikle **immünofloresan boyamalar** için ideal olup antijen yapılarının bozulmadan incelenmesine imkân tanır.

(Leica/CM1950)

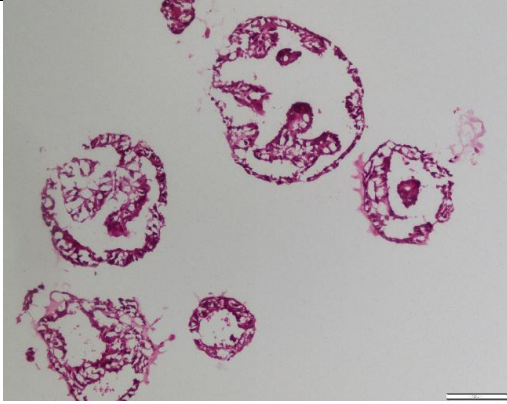




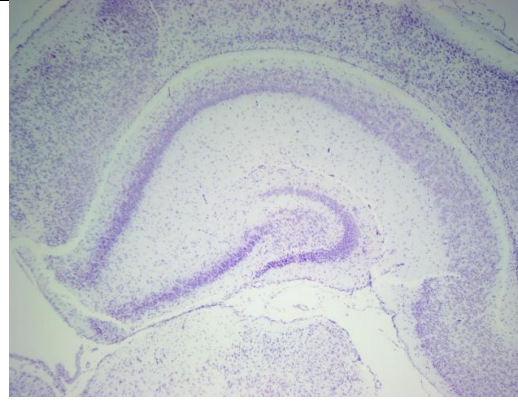
Akciğer, Frozen kesiti, H&E boyama



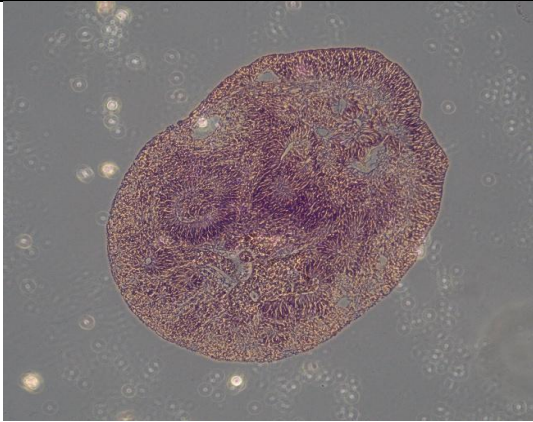
Akciğer, Frozen kesiti, H&E boyama



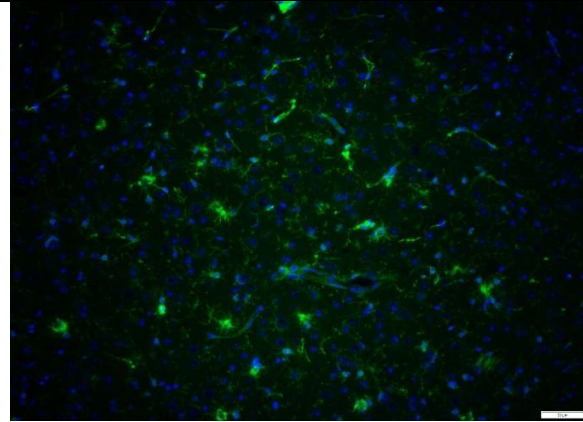
Organoid, Frozen kesiti, H&E boyama



Beyin, Frozen kesitii, Cristal Violet



Retinal organoid H&E Day 90



Beyin, Frozen kesit, iba1

